

Northern Michigan is much more than a geographical marker or a census demographic. **Northern Michigan is a community.** Each village, township, city and county is a part of a unique collection that combines to form this wonderful part of the country we call home.

Since 1996, Bradley J. Butcher & Associates, PC has been helping our neighbors plan for the future, whether there's an immediate need for a new facility or a long range vision of community-wide improvements.



Pavilion on Court, Gaylord



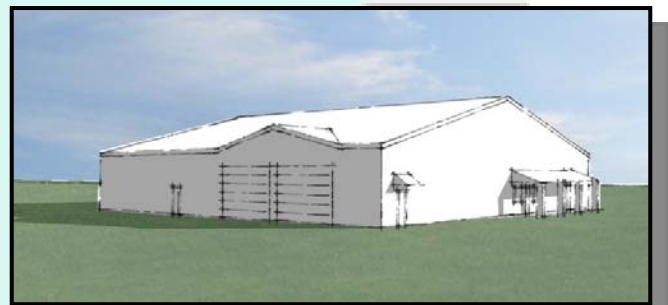
Grayling City Hall/Police Station



Littlefield/Alanson Public Library

Here's a look at a few of our current Northern Michigan community projects either in design or under construction...

Otsego Lake Township Fire Department – Expansion Feasibility Study – Butcher & Associates, PC has been working with the township to evaluate the existing fire station building for the purpose of renovating and expanding to accommodate fire protection needs in the future. Several alternatives are planned based upon practical construction methods, available space on the existing property, and budget/funding sources. The end product of the study will provide the township board with the information necessary to make an informed decision about the fire department and its equipment and facilities.



3D Massing Model of one alternative

Grayling Fish Hatchery Adaptive Reuse – Crawford County District Health Department and MSU Extension Office

Butcher & Associates, PC conducted studies in 2010 for the adaptive reuse of a 7,800 square foot former fish hatchery complex built in 1920. Proposed uses for the complex include renovating the upper level for County Health Department offices, as well as new entrance and lower level renovations for MSU Extension Office and support of upper level. Additional structural reviews of the property have been conducted, and the County is evaluating the feasibility of renovating and repurposing this important piece of local history.



Great Lakes Design Update

Spotlight on Northern Michigan Communities, continued

Fall 2010

Otsego County Public Library – Butcher & Associates, PC has been working with the Otsego County Library since 2004 on long range planning and feasibility studies for expansion of the current library's facility. As Otsego County Library celebrates its 25th anniversary, the project is gaining momentum and continues to receive public support. The project is currently awaiting funding.



Kinross Charter Township Fire and Ambulance Facility – Currently in preliminary design, the new facility will combine the Kinross Emergency Medical Service (26 employees) and the Kinross Volunteer Fire Department (16 fire fighters). The new facility will accommodate the 4 ambulances of the EMS service and the 6 fire trucks of the Fire Department which serves the Kincheloe/Kinross Township community in Michigan's Upper Peninsula.



Gaylord Downtown Development Authority – 2010 Facade Improvement Program

Several downtown businesses are participating in the facade improvement program, including Butcher & Associates projects for Tools to Teach and 138 W. Main for Diana's Delights Restaurant.

BJBA's Sketch Up Rendering:

of 144 West Main Street
on left (Tools to Teach)



and 138 W. Main Street
on right (Diana's Delights)

under construction...



7/20/10

9/03/10

