

Great Lakes Design Update

As we approach the end of 2006, Bradley J Butcher & Associates, PC would like to take this opportunity to celebrate our residential clients. "There's no place like home... in Northern Michigan!"

Year End 2006

BJB Classics...



Lake Charlevoix, Horton Bay, MI



Loon Golf Club, Gaylord, MI

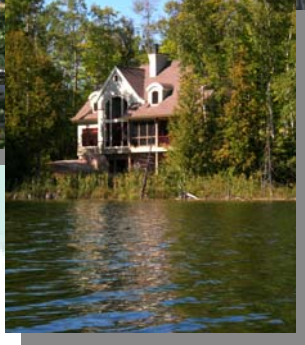


Gaylord, MI

Recent Arrivals...



Twin Lakes Cottage
Cheboygan, MI



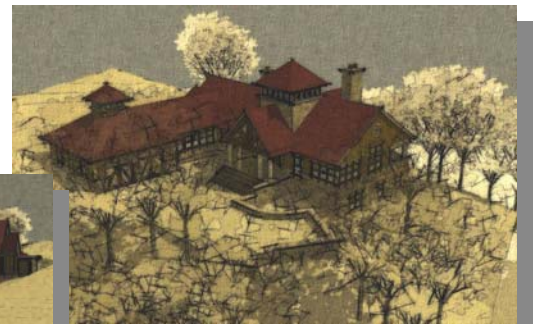
Otsego Lake
Gaylord, MI

Coming Soon...

welcoming new neighbors from Phoenix, AZ
Single Family Residence
Old Mission Peninsula
Traverse City, MI

Currently in design and slated for construction in 2007, this is a beautifully situated site, 125' above East Grand Traverse Bay.

These renderings were produced in-house by BJB staff.



Bradley J. Butcher & Associates, PC
147 West Main St · Suite 303 · Gaylord, MI 49735
(phone) 989.731.4343 · 989.731.5037 (fax)
www.butcherandassociates.com